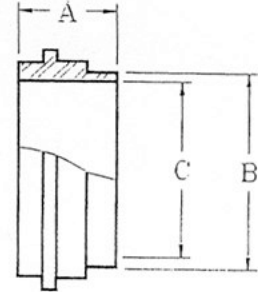


## OTHER FITTINGS

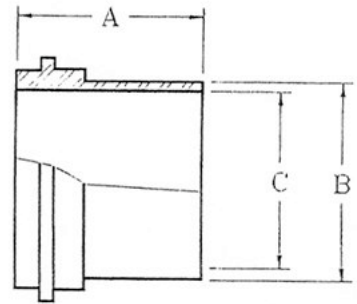
### P14WJP - JOHN PERRY TYPE FERRULE

SIZE (TUBE O.D.)	A	B	C	APPROX. WT. (lbs.)
1	0.688	1.000	0.870	0.09
1 ½	0.718	1.500	1.370	0.10
2	0.810	2.000	1.870	0.18
2 ½	0.840	2.500	2.370	0.28
3	0.849	3.000	2.870	0.41
4	1.201	4.000	3.834	0.65



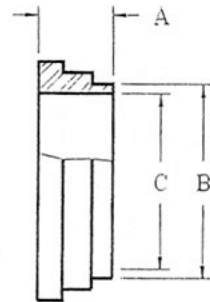
### P14AJP - JOHN PERRY TYPE FERRULE (Long)

SIZE (TUBE O.D.)	A	B	C	APPROX. WT. (lbs.)
1	1.375	1.000	0.870	0.06
1 ½	1.500	1.500	1.370	0.22
2	1.500	2.000	1.870	0.35
2 ½	1.750	2.500	2.370	0.54
3	1.750	3.000	2.870	0.65
4	1.750	4.000	3.834	0.78



### P14WFF - FLAT FACE WELD FERRULE

SIZE (TUBE O.D.)	A	B	C	APPROX. WT. (lbs.)
1	0.563	1.000	0.870	0.06
1 ½	0.625	1.500	1.370	0.08
2	0.687	2.000	1.870	0.16
2 ½	0.625	2.500	2.370	0.26
3	0.656	3.000	2.870	0.38
4	1.000	4.000	3.834	0.62



### P15WFF - ACME THREADED FLAT FACE FERRULE

SIZE (TUBE O.D.)	A	B	C	APPROX. WT. (lbs.)
1	0.625	1.000	0.870	0.15
1 ½	0.625	1.500	1.370	0.16
2	0.750	2.000	1.870	0.28
2 ½	0.844	2.500	2.370	0.44
3	0.875	3.000	2.870	0.60
4	1.062	4.000	3.834	1.10

