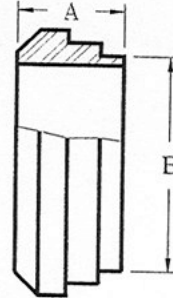


## SANITARY ACME THREADED FITTINGS

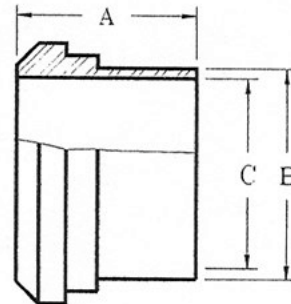
### P14WF - PLAIN SHORT WELD FERRULE

SIZE (TUBE O.D.)	A	B	APPROX. WT. (lbs.)
1	0.688	1.000	0.10
1 ½	0.719	1.500	0.10
2	0.719	2.000	0.20
2 ½	0.844	2.500	0.31
3	0.906	3.000	0.43
4	1.219	4.000	0.69



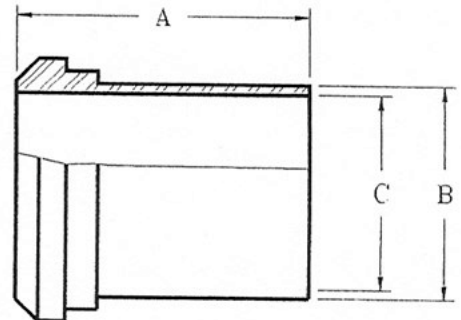
### P14A - PLAIN TUBE FERRULE

SIZE (TUBE O.D.)	A	B	C	APPROX. WT. (lbs.)
1	1.375	1.000	0.870	0.06
1 ½	1.500	1.500	1.370	0.25
2	1.500	2.000	1.870	0.37
2 ½	1.750	2.500	2.370	0.58
3	1.750	3.000	2.870	0.70
4	1.750	4.000	3.834	0.82



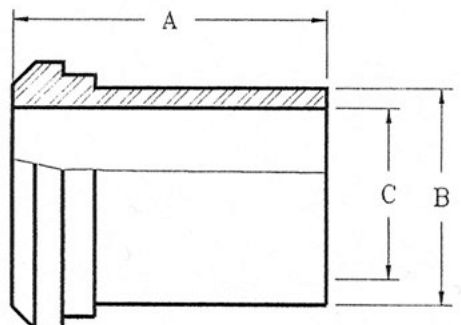
### P14WL - PLAIN FERRULE TANK SPUD (Light)

SIZE (TUBE O.D.)	A	B	C	APPROX. WT. (lbs.)
1	2.000	1.000	0.870	0.09
1 ½	2.250	1.500	1.370	0.19
2	2.500	2.000	1.870	0.38
2 ½	2.750	2.500	2.370	0.54
3	3.000	3.000	2.870	0.78
4	4.000	4.000	3.834	1.24



### P14W - PLAIN FERRULE TANK SPUD (Heavy)

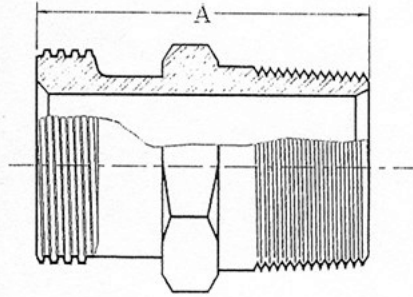
SIZE (TUBE O.D.)	A	B	C	APPROX. WT. (lbs.)
1	2.375	1.156	0.870	0.34
1 ½	2.531	1.672	1.370	0.50
2	2.781	2.813	1.870	0.82
2 ½	3.063	2.703	2.370	1.25
3	3.531	3.531	2.870	2.64
4	4.313	4.250	3.834	3.45



## SANITARY ACME THREADED FITTINGS

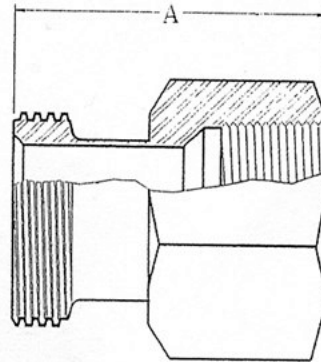
### P21 - ACME THREAD x MALE N.P.T. ADAPTER

SIZE (TUBE O.D.)	A	APPROX. WT. (lbs.)
1 x ¾	2.188	0.48
1 x 1	2.250	0.50
1 ½ x 1 ¼	2.438	0.64
1 ½ x 1 ½	2.438	0.66
2 x 1 ½	2.469	0.96
2 x 2	2.656	1.12
2 ½ x 2	2.781	1.25
2 ½ x 2 ½	3.281	1.81
3 x 3	3.500	2.75
4 x 4	3.813	3.75



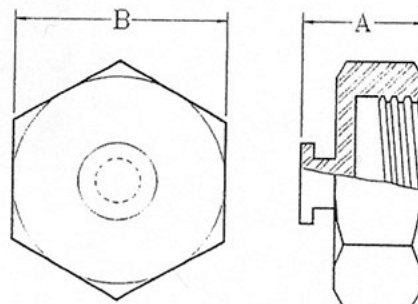
### P22 - ACME THREAD x FEMALE N.P.T. ADAPTER

SIZE (TUBE O.D.)	A	APPROX. WT. (lbs.)
1 x ¾	1.625	0.36
1 x 1	2.063	0.38
1 ½ x 1 ¼	2.500	0.97
1 ½ x 1 ½	2.250	1.00
2 x 1 ½	1.656	1.16
2 x 2	2.344	1.44
2 ½ x 2	1.844	1.56
2 ½ x 2 ½	2.094	2.12
3 x 3	2.188	2.88
4 x 4	2.625	4.12



### P151 - HEX BLIND CAP (c/w S/S CHAIN)

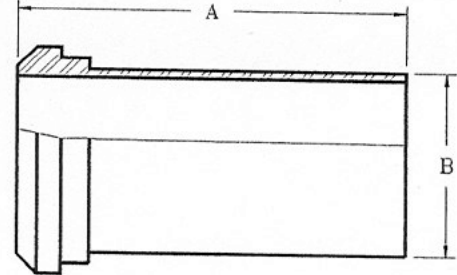
SIZE (TUBE O.D.)	A	B	APPROX. WT. (lbs.)
1	1.000	1.813	0.35
1 ½	1.063	2.406	0.65
2	1.125	3.000	0.89
2 ½	1.250	3.594	1.45
3	1.250	4.188	2.10
4	1.500	5.438	3.90



## SANITARY ACME THREADED FITTINGS

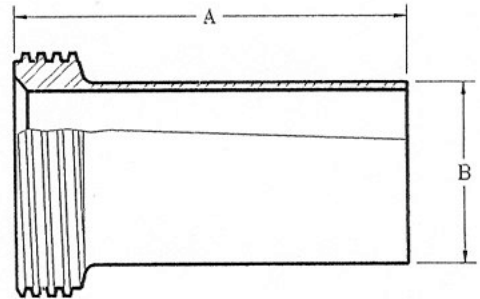
### P14AHT - PLAIN x TYGON HOSE ADAPTER

SIZE (TUBE O.D.)	A	B	APPROX. WT. (lbs.)
1	4.688	1.000	0.31
1 ½	4.719	1.500	0.50
2	4.719	2.000	0.68
2 ½	4.844	2.500	0.87
3	4.906	3.000	1.12
4	5.219	4.000	1.68



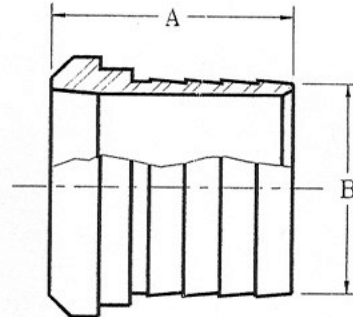
### P15AHT - THREADED x TYGON HOSE ADAPTER

SIZE (TUBE O.D.)	A	B	APPROX. WT. (lbs.)
1	4.688	1.000	0.34
1 ½	4.719	1.500	0.56
2	4.719	2.000	0.79
2 ½	4.844	2.500	1.03
3	4.906	3.000	1.34
4	5.219	4.000	2.19



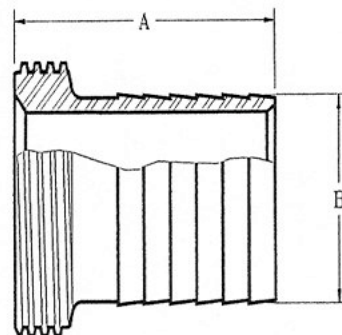
### P14AHR - PLAIN RUBBER HOSE ADAPTER

SIZE (TUBE O.D.)	A	B	APPROX. WT. (lbs.)
1	1.688	1.031	0.14
1 ½	1.688	1.531	0.26
2	2.313	2.031	0.53
2 ½	2.344	2.531	0.80
3	3.500	3.031	1.12
4	4.000	4.031	1.54



### P15AHR - THREADED RUBBER HOSE ADAPTER

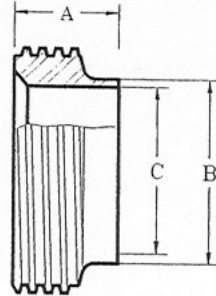
SIZE (TUBE O.D.)	A	B	APPROX. WT. (lbs.)
1	1.688	1.031	0.17
1 ½	1.688	1.531	0.32
2	2.313	2.031	0.64
2 ½	2.344	2.531	0.96
3	3.500	3.031	1.34
4	4.000	4.031	2.05



## SANITARY ACME THREADED FITTINGS

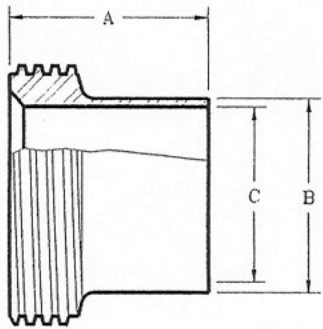
### P15WF - THREADED SHORT WELD FERRULE

SIZE (TUBE O.D.)	A	B	C	APPROX. WT. (lbs.)
1	0.688	1.000	0.870	0.15
1 ½	0.719	1.500	1.370	0.15
2	0.719	2.000	1.870	0.29
2 ½	0.844	2.500	2.370	0.45
3	0.906	3.000	2.870	0.62
4	1.219	4.000	3.834	1.15



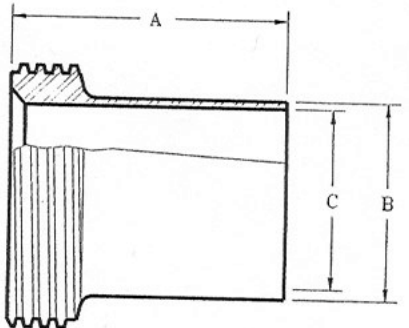
### P15A - THREADED TUBE FERRULE

SIZE (TUBE O.D.)	A	B	C	APPROX. WT. (lbs.)
1	1.375	1.000	0.870	0.09
1 ½	1.500	1.500	1.370	0.20
2	1.500	2.000	1.870	0.38
2 ½	1.750	2.500	2.370	0.63
3	1.750	3.000	2.870	0.87
4	1.750	4.000	3.834	1.29



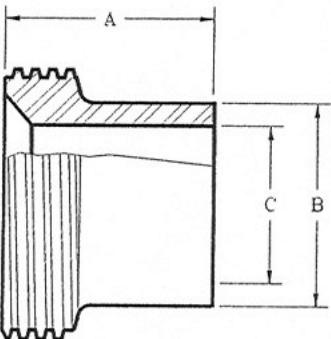
### P15WL - THREADED FERRULE TANK SPUD (Light)

SIZE (TUBE O.D.)	A	B	C	APPROX. WT. (lbs.)
1	2.000	1.000	0.870	0.12
1 ½	2.250	1.500	1.370	0.25
2	2.500	2.000	1.870	0.49
2 ½	2.750	2.500	2.370	0.70
3	3.000	3.000	2.870	1.00
4	4.000	4.000	3.834	1.75



### P15W - THREADED FERRULE TANK SPUD (Heavy)

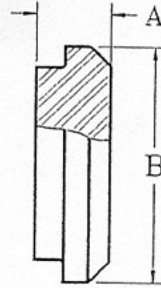
SIZE (TUBE O.D.)	A	B	C	APPROX. WT. (lbs.)
1	1.500	1.250	0.870	0.17
1 ½	1.625	1.750	1.370	0.35
2	1.750	2.313	1.870	0.69
2 ½	1.750	2.875	2.370	1.00
3	1.813	3.375	2.870	1.40
4	2.125	4.250	3.834	2.50



## SANITARY ACME THREADED FITTINGS

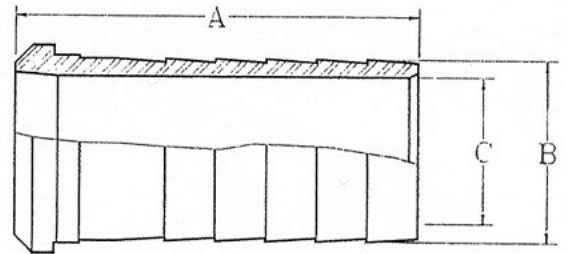
### P16A - PLAIN CAP

SIZE (TUBE O.D.)	A	B	APPROX. WT. (lbs.)
1	0.469	1.313	0.12
1 ½	0.563	1.844	0.30
2	0.625	2.375	0.65
2 ½	0.656	2.906	0.90
3	0.719	3.438	1.90
4	0.813	4.500	3.10



### P14AHRB - PLAIN x RUBBER HOSE ADAPTER (Brewery Style - Long)

SIZE (TUBE O.D.)	A	B	C	APPROX. WT. (lbs.)
1	3.500	1.031	0.813	0.35
1 ½	3.500	1.625	1.313	0.45
2	4.500	2.125	1.813	0.95
2 ½	4.500	2.625	2.313	1.25
3	4.500	3.125	2.813	1.75
4	6.250	4.125	4.813	2.75



### P15AHRB - ACME THREADED x RUBBER HOSE ADAPTER (Brewery Style - Long)

SIZE (TUBE O.D.)	A	B	C	APPROX. WT. (lbs.)
1	3.500	1.031	0.813	0.35
1 ½	3.500	1.625	1.313	0.45
2	4.500	2.125	1.813	0.95
2 ½	4.500	2.625	2.313	1.25
3	4.500	3.125	2.813	1.75
4	6.250	4.125	4.813	2.75

