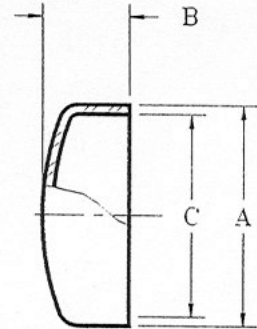


## BUTT WELD FITTINGS

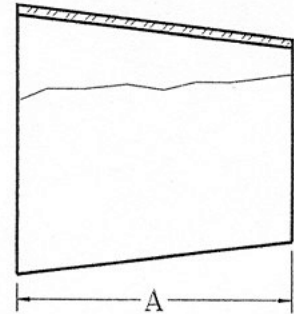
### P16W - BUTT WELD CAP

SIZE (TUBE O.D.) A	B	C	APPROX. WT. (lbs.)
1	0.438	0.870	0.05
1 ½	0.563	1.370	0/09
2	0.750	1.870	0.25
2 ½	1.063	2.370	0.29
3	1.125	2.870	0.33
4	1.250	3.834	0.56



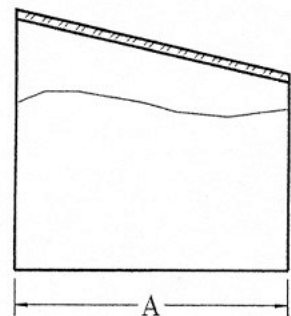
### P31W - BUTT WELD CONCENTRIC REDUCER

SIZE (TUBE O.D.)	A	APPROX. WT. (lbs.)	SIZE (TUBE O.D.)	A	APPROX. WT. (lbs.)
1 ½ x 1	2.000	0.12	3 x 2 ½	2.000	0.30
2 x 1	4.000	0.34	4 x 1	12.000	1.12
2 x 1 ½	2.000	0.18	4 x 1 ½	10.000	1.80
2 ½ x 1	6.000	0.55	4 x 2	8.000	1.66
2 ½ x 1 ½	4.000	0.43	4 x 2 ½	6.000	1.50
2 ½ x 2	2.000	0.25	4 x 3	4.000	1.15
3 x 1	8.000	1.00	6 x 3	6.000	2.60
3 x 1 ½	6.000	0.93	6 x 4	4.000	1.92
3 x 2	4.000	0.56			



### P32W - BUTT WELD ECCENTRIC REDUCER

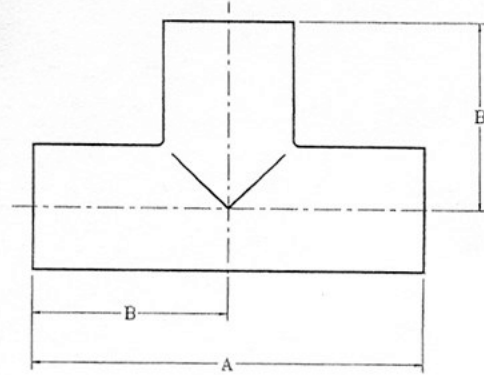
SIZE (TUBE O.D.)	A	APPROX. WT. (lbs.)	SIZE (TUBE O.D.)	A	APPROX. WT. (lbs.)
1 ½ x 1	2.000	0.12	3 x 2 ½	2.000	0.30
2 x 1	4.000	0.34	4 x 1	12.000	1.12
2 x 1 ½	2.000	0.18	4 x 1 ½	10.000	1.80
2 ½ x 1	6.000	0.55	4 x 2	8.000	1.66
2 ½ x 1 ½	4.000	0.43	4 x 2 ½	6.000	1.50
2 ½ x 2	2.000	0.25	4 x 3	4.000	1.15
3 x 1	8.000	1.00	6 x 3	6.000	2.60
3 x 1 ½	6.000	0.93	6 x 4	4.000	1.92
3 x 2	4.000	0.56			



**BUTT WELD FITTINGS**

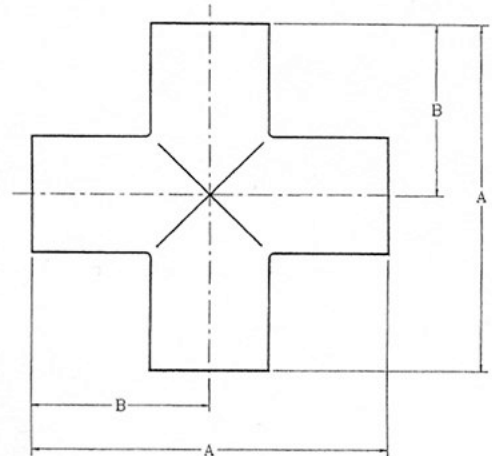
**P7W - BUTT WELD TEE**

SIZE (TUBE O.D.)	A	B	APPROX. WT. (lbs.)
1	3.750	1.875	0.28
1 ½	4.500	2.250	0.46
2	6.000	3.000	0.98
2 ½	6.000	3.000	1.32
3	6.500	3.250	1.76
4	7.750	3.875	2.89
6	10.000	5.000	8.00



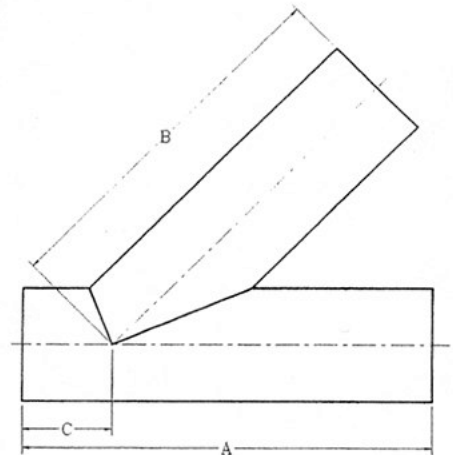
**P9W - BUTT WELD CROSS**

SIZE (TUBE O.D.)	A	B	APPROX. WT. (lbs.)
1	3.750	1.875	0.34
1 ½	4.500	2.250	0.60
2	6.000	3.000	1.38
2 ½	6.000	3.000	1.90
3	6.500	3.250	2.11
4	7.750	3.875	3.40
6	10.000	5.000	9.50



**P28WA - BUTT WELD LATERAL "Y"**

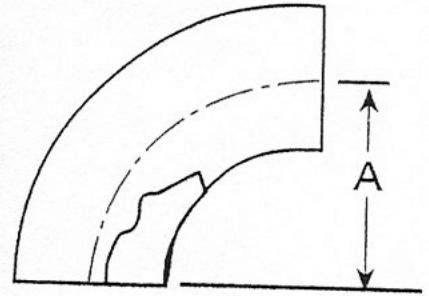
SIZE (TUBE O.D.)	A	B	C	APPROX. WT. (lbs.)
½	6.000	5.000	1.000	0.20
¾	6.000	5.000	1.000	0.31
1	6.000	5.000	1.000	0.62
1 ½	7.375	6.813	1.188	1.10
2	8.750	7.125	1.625	1.80
2 ½	10.000	8.500	1.500	2.45
3	10.750	8.875	1.875	3.12
4	12.813	10.750	2.063	6.60
6	16.500	12.500	4.000	15.40



## BUTT WELD FITTINGS

### P2SX - 90° Elbow

SIZE (TUBE O.D.)	A	APPROX. WT. (lbs.)
1/2	3/4	0.03
3/4	1 1/8	0.08
1	1 1/2	0.13
1 1/2	2 1/4	0.29
2	3	0.52
2 1/2	3 3/4	0.87
3	4 1/2	1.53
4	6	2.85
6	9	8.53



### P2KS - 45° Elbow

SIZE (TUBE O.D.)	A	APPROX. WT. (lbs.)
1/2	5/16	0.15
3/4	15/32	0.04
1	5/8	0.08
1 1/2	15/16	0.15
2	1 1/4	0.26
2 1/2	1 9/16	0.44
3	1 7/8	0.77
4	2 1/2	1.43
6	3 3/4	4.26

